

Mankar College



DEPARTMENT OF GEOGRAPHY

PRESENTS

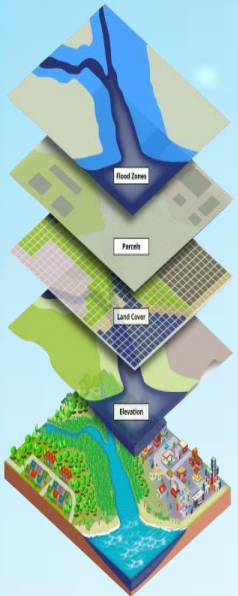
Certificate course in

Introduction to GIS

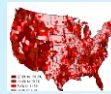
This certificate course in 'Introduction to GIS' comprises different skills to understand the basic concepts and application of Geographic Information System. A Geographic Information System (GIS) is a system that creates, manages, analyzes, and maps all types of data. GIS connects data to a map, integrating location data with all types of descriptive information.

Objectives of the Course:

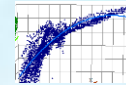
- To understand the basic concepts of GIS.
- To provide efficient means for data distribution and handling.
- To eliminate redundant database-minimize duplication.
- To update data quickly and cheaply.
- To help in analysis of location, condition, trend, pattern and modelling.



Outcome of the Course:



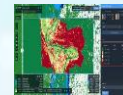
Thematic Mapping



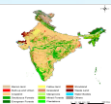
Spatial & Trend analysis



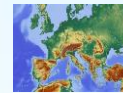
Mapping of Natural



Change Detection



LULC Mapping



Disaster Management

Course Coordinator: Dr. Srabanti Ghosh

Starting from 13.11.2017

Duration of Course: 12 Days

GIS is waking up the world to power of geography, this science of integration, and has the framework for creating a better future'-Jack Dangermond